

P-TRON 05 O TOUCH

METAL SEPARATOR for the installation on Vacuum Fillers.
Optimum detection and safe rejection of metallic contaminants in meat emulsions.

*Developed by
meatprocessing professionals*

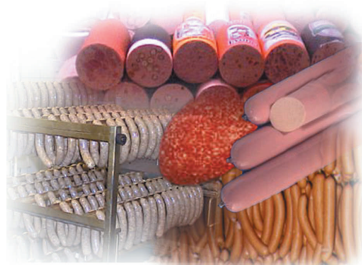


P-TRON 05 O TOUCH

Installation on Vacuum Fillers
Control of sausage meat

- Compact construction high throughput due to a fast-reacting and powerful pneumatic reject drive.
- High sensitivity combined with low material loss due to interval drive.
- Electronic evaluation system with backlit LCD graphics display, touchscreen operating surface and a clearly arranged menu surface.
- Tip-safe chassis with locable casters and a strong frame offer of mobility, combined with shock protection.
- During cleaning of the reject system, the integrated cleaning basket prevents the loss of parts.
- Reliable protection against water intrusion means a high pressure resistant face plate protector.
- Damage and losses during cleaning are a thing of the past!
- Connectable to most Vacuum Fillers with adapters, precise height adoption via spindle drive.
- Protected against technical mishaps during the production process. All components are pressure-proof up to 30 bar!
- All cables are equipped with quick connectors, giving flexibility and ease of transport.
- Expanded system monitoring offers highest reliability. Faults are reliably indicated in real time.

We assure
metal free
products

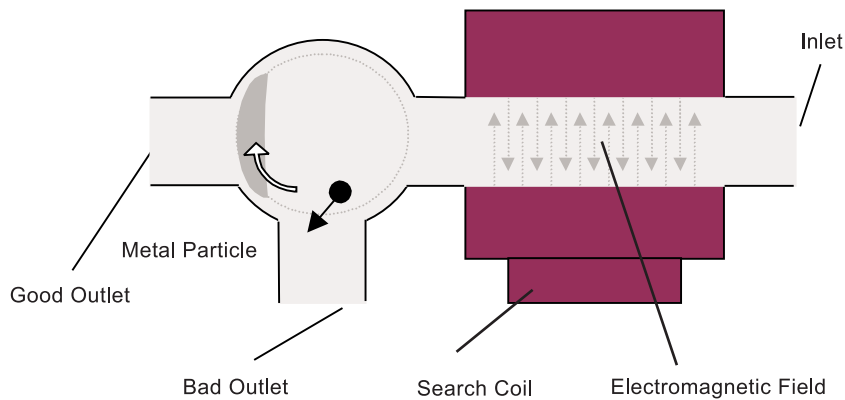


The Power of Metal Detection

MESUTRONIC[®]
Metal detectors and separators

MESUTRONIC Gerätebau GmbH
Höllmannsried 31 · D-94259 Kirchberg
Tel.: 09927-94 10-0 · Fax: 09927-1732
E-Mail: sales@mesutronic.de
Internet: www.mesutronic.de

Working Principle



Sequence of Functions

Electronic Metal Separators of the series P-TRON 05 O **TOUCH** remove metallic contaminants from pasty food and food emulsions automatically and without interruption of the process.

Clean product - without metallic contaminants passes through the detector. Metallic contaminants in the product stream change the high frequency field.

In this case the electronic evaluation system generates an impulse to activate the solenoid of the reject gate cylinder.

Due to the rapid diversion of the product stream, product loss is minimized, reject time (dwell of the reject gate) is adjustable.

Reject time will be extended by the preprogrammed time interval, should several metal particles pass through within the given timeframe.

After the metal particle has been successfully rejected the gate returns automatically to the normal position.



Metal Separator P-TRON 05 O **TOUCH**
installed on a Vacuum Filler